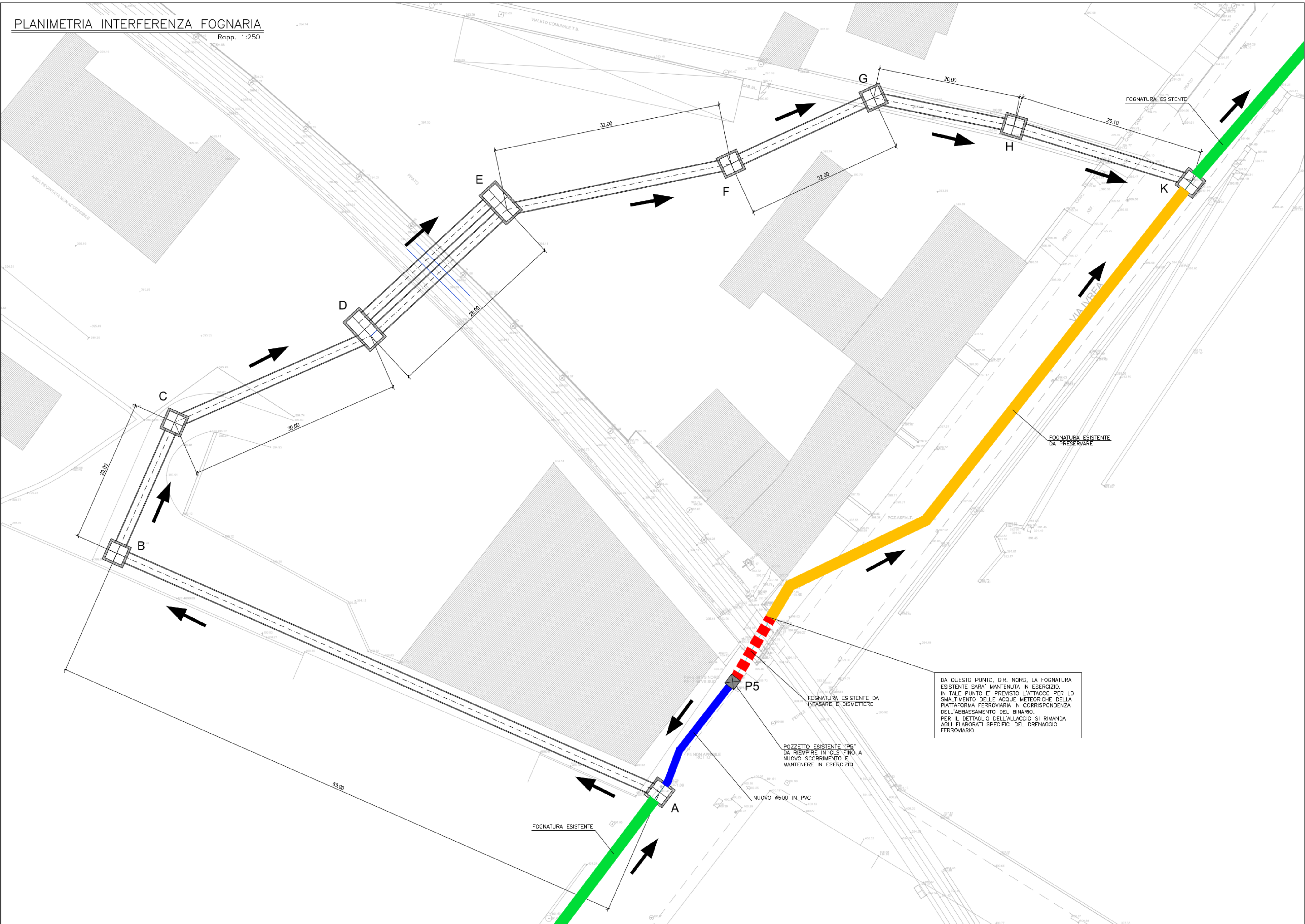
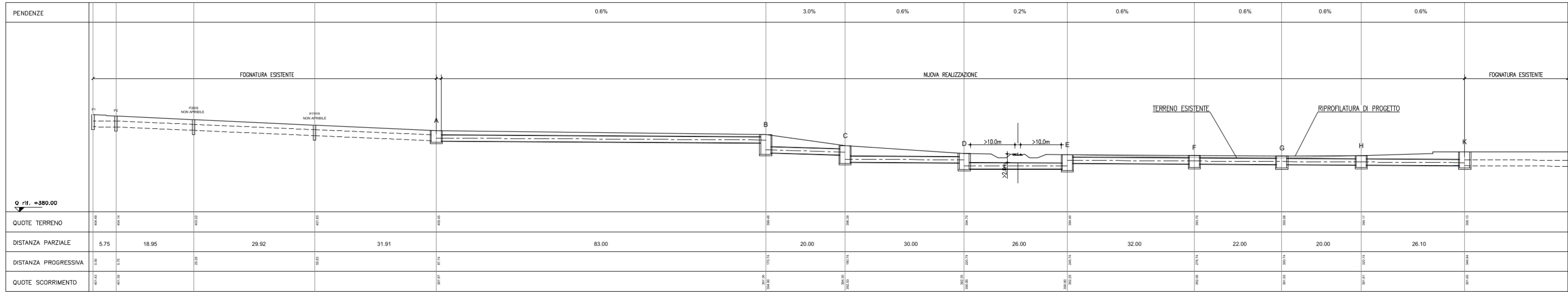


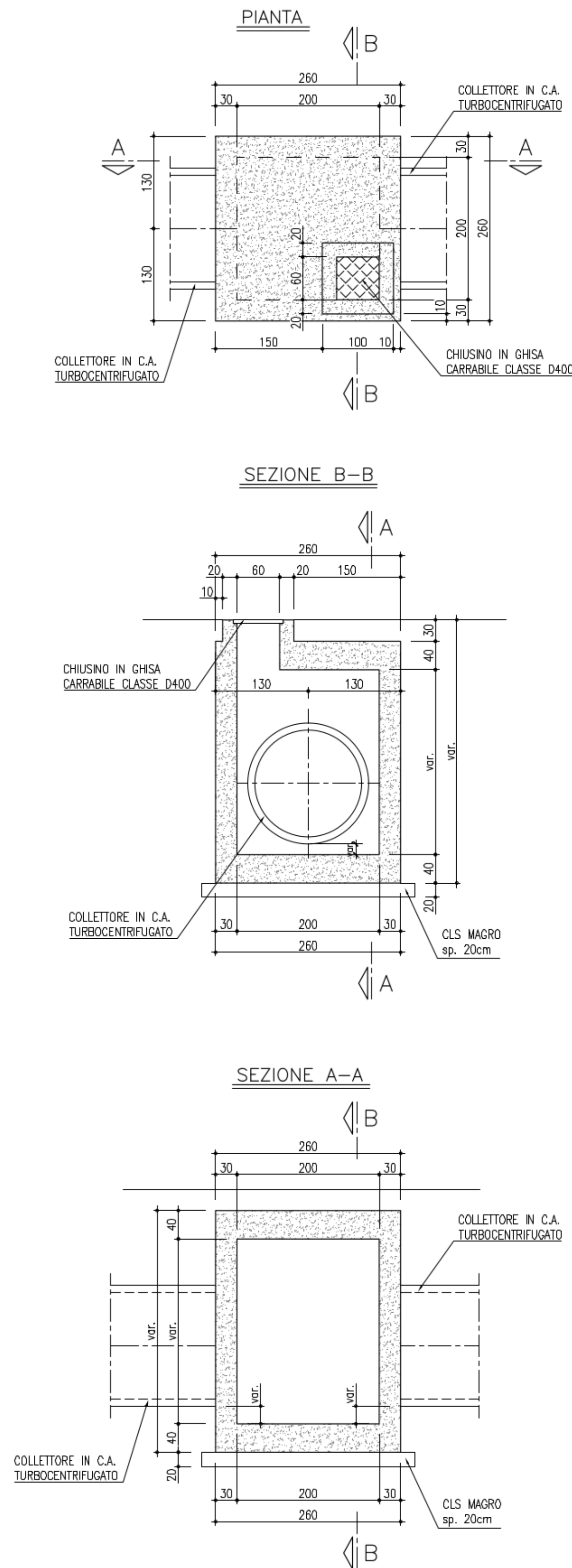
PLANIMETRIA INTERFERENZA FOGNARIA
Rapp. 1:250



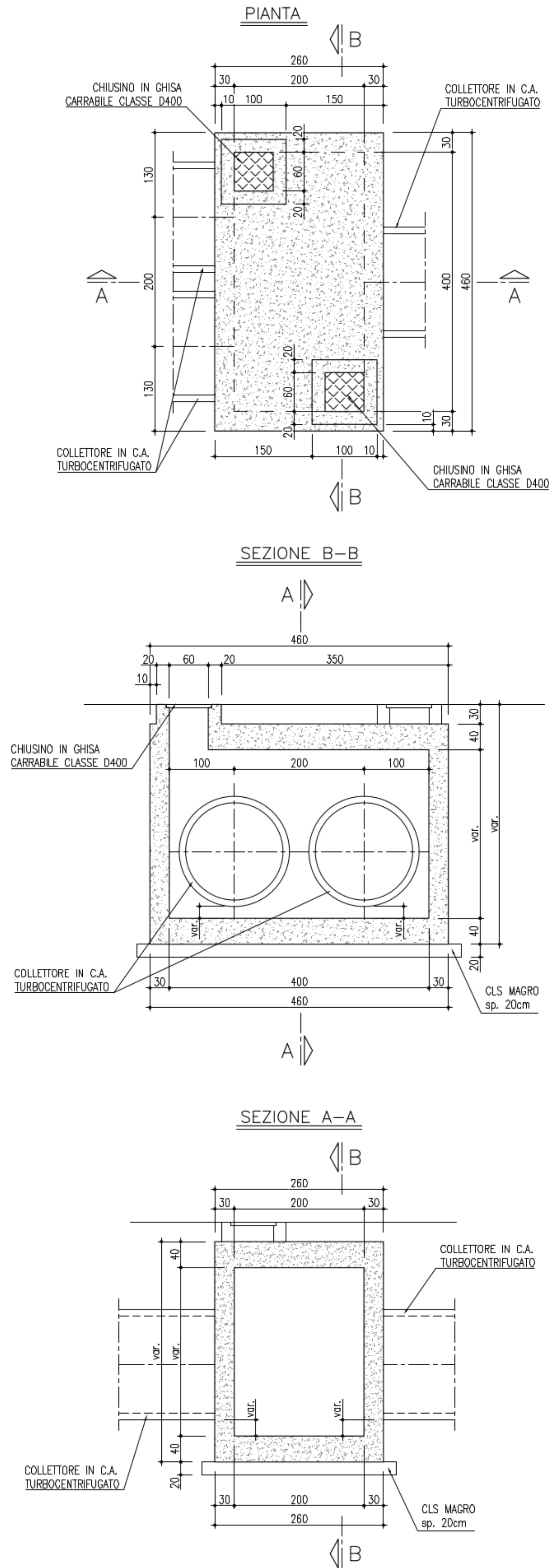
PROFILO INTERFERENZA FOGNARIA
Rapp. 1:500



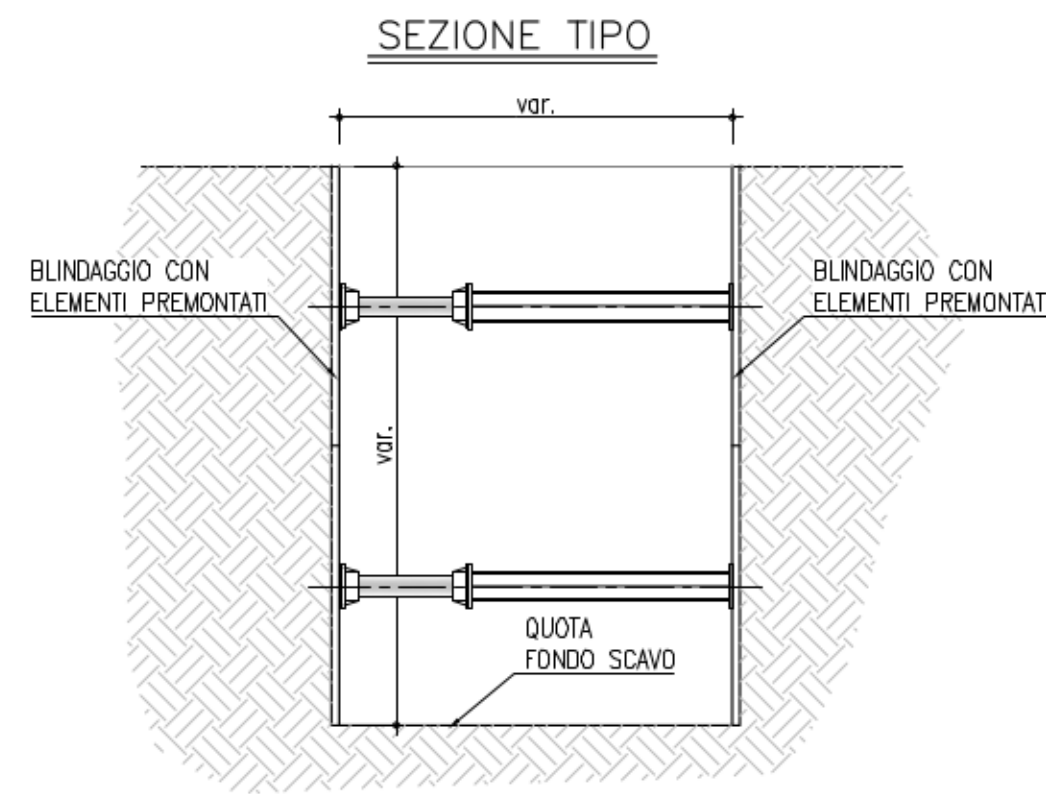
POZZETTO FOGNARIO
TIPO A-B-C-F-G-H-K
Rapp. 1:50



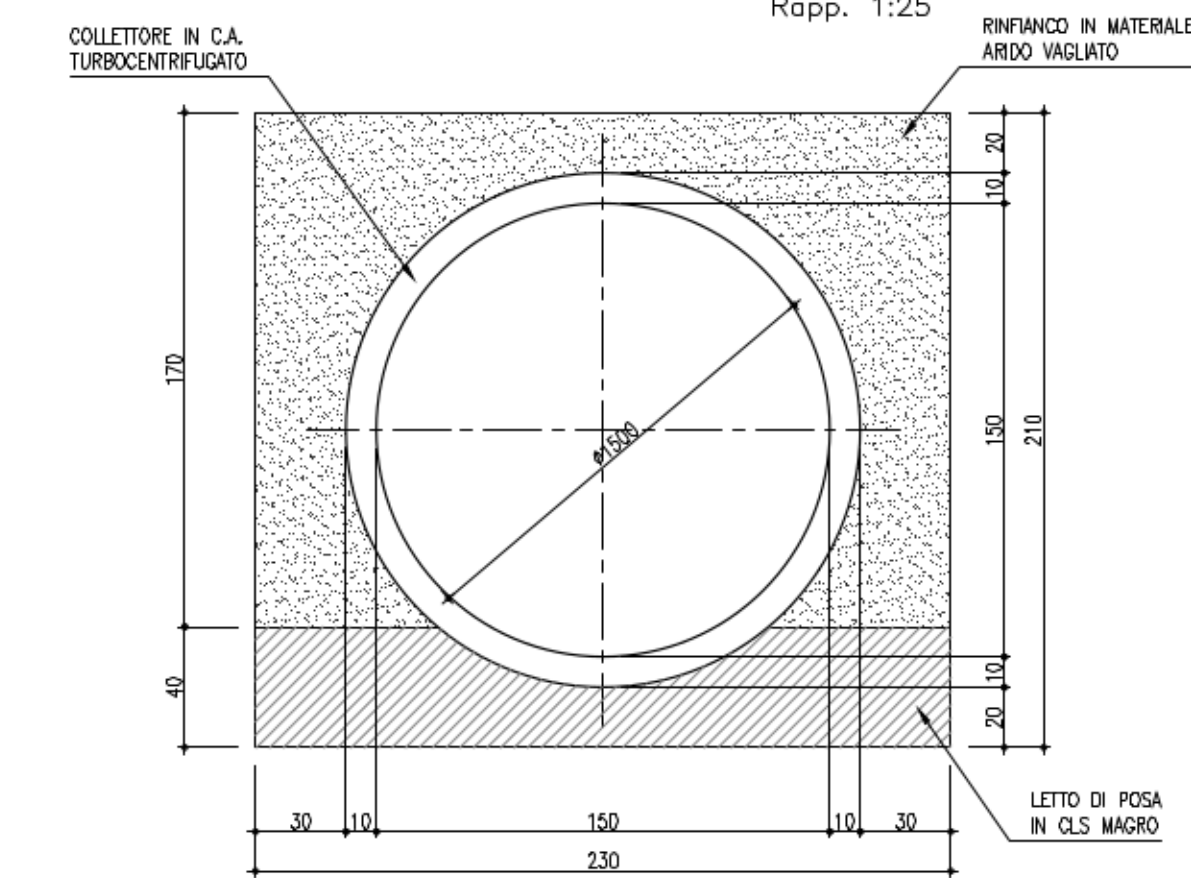
POZZETTO FOGNARIO
TIPO D-E
Rapp. 1:50



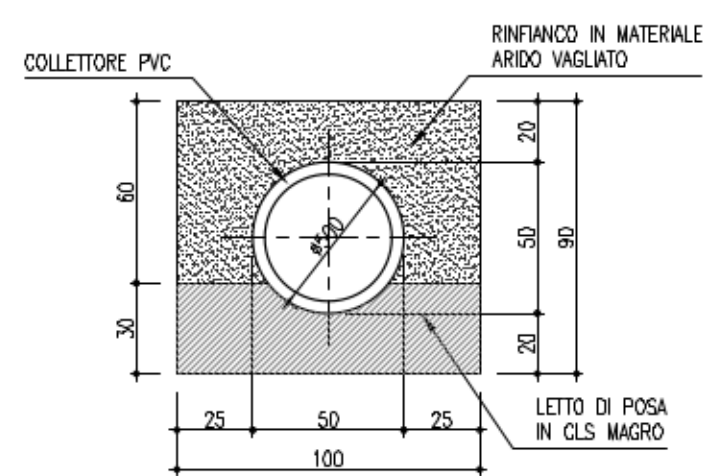
SCAVO REALIZZATO CON
SISTEMA BLINDOSCAVO



SEZ. TRASVERSALE
COLLETTORE FOGNARIO



SEZ. COLLETTORE IN PVC



n. pozzetto	dim. interne	altezza
A	2.00x2.00	3.00m
B	2.00x2.00	5.00m
C	2.00x2.00	4.50m
D	2.00x4.00	4.00m
E	2.00x4.00	4.00m
F	2.00x2.00	3.00m
G	2.00x2.00	3.00m
H	2.00x2.00	3.00m
K	2.00x2.00	4.00m



CUP: J02C1000510002

U.O. PROGETTAZIONE INTEGRATA NORD

PROGETTO DEFINITIVO

Elettrificazione della linea ferroviaria Rivarolo - Pont Canavese

RISOLUZIONE INTERFERENZA FOGNARIA
Planimetria, profilo e sezione tipo

COMMESSA LOTTO FASE ENTE TIPO DOC. OPERA/DISCIPLINA PROGR. REV.

NT29 01 D 26 PZ 1D0102 001 A

Rev. Descrizione Redatto Data Verificato Data Approvato Data Autorizzato / Data

A